

**SL 96**  
SPECIAL EDITION

MADE TO MEASURE *Yachts.*  
*Since 1958*

**SANLORENZO**

SL96 - 618

**SL 96**  
SPECIAL EDITION

MADE TO MEASURE *Yachts.*  
*Since 1958*



SL96 - 618

**SANLORENZO**

**SL 96**  
SPECIAL EDITION

MADE TO MEASURE *Yachts.*  
*Since 1958*



*SL96 - 618*

**SANLORENZO**

**SL 96**  
SPECIAL EDITION

MADE TO MEASURE *Yachts.*  
*Since 1958*



SL96 - 618

**SANLORENZO**

**SL 96**  
SPECIAL EDITION

MADE TO MEASURE *Yachts.*  
*Since 1958*



SL96 - 618

**SANLORENZO**

**SL 96**  
SPECIAL EDITION

MADE TO MEASURE *Yachts.*  
*Since 1958*



SL96 - 618

**SANLORENZO**

**SL 96**  
SPECIAL EDITION

MADE TO MEASURE *Yachts.*  
*Since 1958*



后甲板 *Cockpit*

SL96 - 618

**SANLORENZO**

# SL 96

SPECIAL EDITION

MADE TO MEASURE *Yachts.*  
Since 1958



沙龙 *Salon*

SL96 - 618

**SANLORENZO**



**SL 96**  
SPECIAL EDITION

MADE TO MEASURE *Yachts.*  
*Since 1958*



沙龙 *Salon*

SL96 - 618

**SANLORENZO**

**SL 96**  
SPECIAL EDITION

MADE TO MEASURE *Yachts.*  
*Since 1958*



沙龙 *Salon*

SL96 - 618

**SANLORENZO**

**SL 96**  
SPECIAL EDITION

MADE TO MEASURE *Yachts.*  
*Since 1958*



沙龙 *Salon*

SL96 - 618

**SANLORENZO**

**SL 96**  
SPECIAL EDITION

MADE TO MEASURE *Yachts.*  
*Since 1958*



**SL 96**  
SPECIAL EDITION

MADE TO MEASURE *Yachts.*  
*Since 1958*



沙龙 *Salon*

SL96 - 618

**SANLORENZO**

**SL 96**  
SPECIAL EDITION

MADE TO MEASURE *Yachts.*  
*Since 1958*



用餐区 *Dining*

SL96 - 618

**SANLORENZO**

**SL 96**  
SPECIAL EDITION

MADE TO MEASURE *Yachts.*  
*Since 1958*



厨房 *Galley*

SL96 - 618

**SANLORENZO**

**SL 96**  
SPECIAL EDITION

MADE TO MEASURE *Yachts.*  
*Since 1958*



主人舱 *Owner's cabin*

SL96 - 618

**SANLORENZO**



**SL 96**  
SPECIAL EDITION

MADE TO MEASURE *Yachts.*  
*Since 1958*



主人舱 *Owner's cabin*

SL96 - 618

**SANLORENZO**

**SL 96**  
SPECIAL EDITION

MADE TO MEASURE *Yachts.*  
*Since 1958*



主人舱 *Owner's cabin*

SL96 - 618

**SANLORENZO**

**SL 96**  
SPECIAL EDITION

MADE TO MEASURE *Yachts.*  
*Since 1958*



主人卫生间 *Owner's bathroom*

SL96 - 618

**SANLORENZO**

**SL 96**  
SPECIAL EDITION

MADE TO MEASURE *Yachts.*  
*Since 1958*



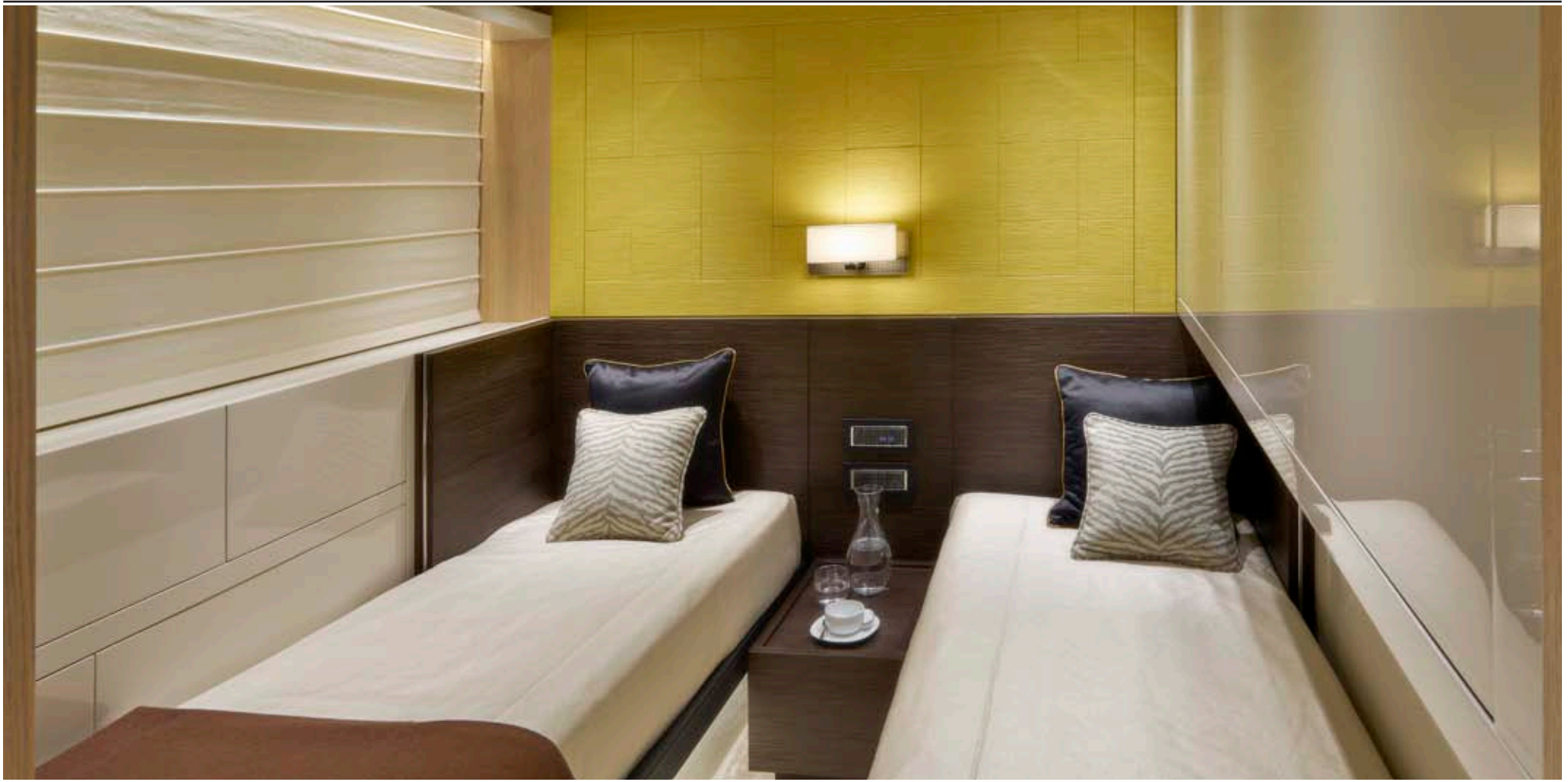
贵宾舱 *VIP Cabin*

SL96 - 618

**SANLORENZO**

**SL 96**  
SPECIAL EDITION

MADE TO MEASURE *Yachts.*  
*Since 1958*



客舱 *Guest Cabin*

SL96 - 618

**SANLORENZO**

**SL 96**  
SPECIAL EDITION

MADE TO MEASURE *Yachts.*  
*Since 1958*



飞桥 *Flying bridge*

SL96 - 618

**SANLORENZO**

**SL 96**  
SPECIAL EDITION

MADE TO MEASURE *Yachts.*  
*Since 1958*



飞桥 *Flying bridge*

SL96 - 618

**SANLORENZO**

**SL 96**  
SPECIAL EDITION

MADE TO MEASURE *Yachts.*  
*Since 1958*



船首 *Bow*

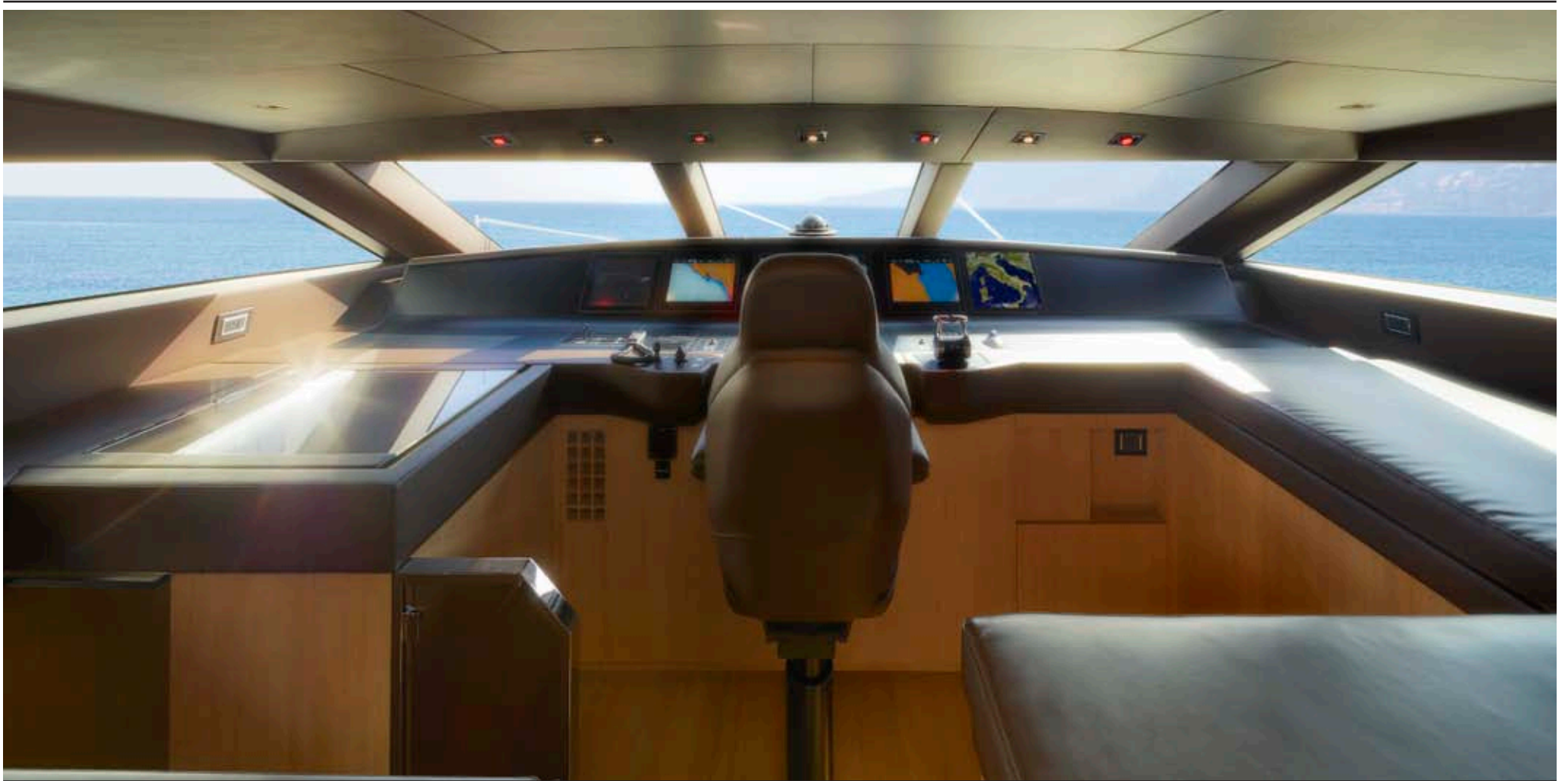
SL96 - 618

**SANLORENZO**



**SL 96**  
SPECIAL EDITION

MADE TO MEASURE *Yachts.*  
*Since 1958*



驾驶室 *Wheelhouse*

SL96 - 618

**SANLORENZO**

# SL 96

SPECIAL EDITION

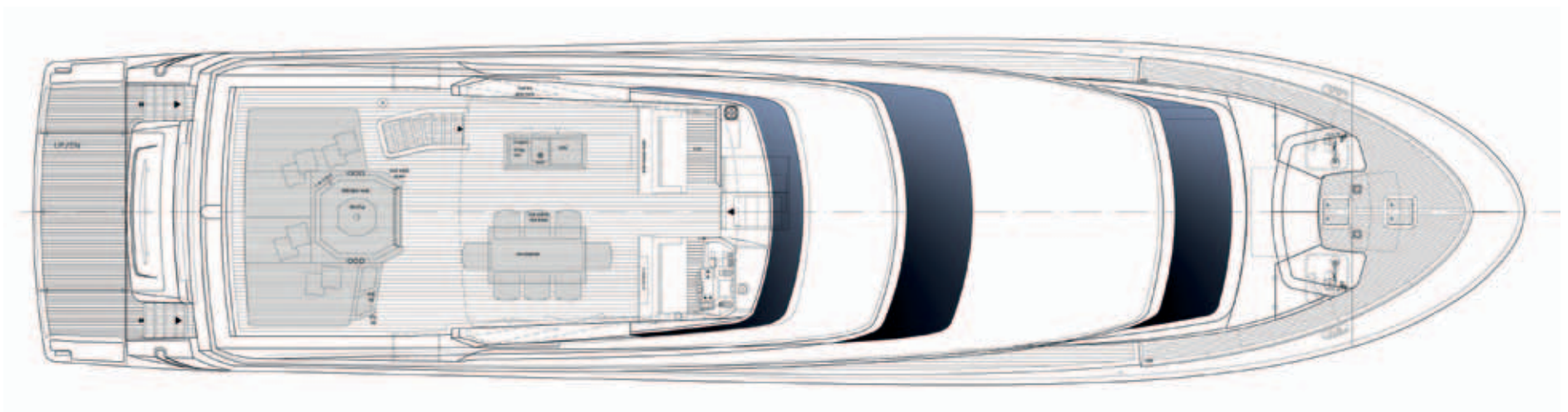
MADE TO MEASURE *Yachts.*  
Since 1958



# SL 96

SPECIAL EDITION

MADE TO MEASURE *Yachts.*  
Since 1958



飞桥 *Flying bridge*

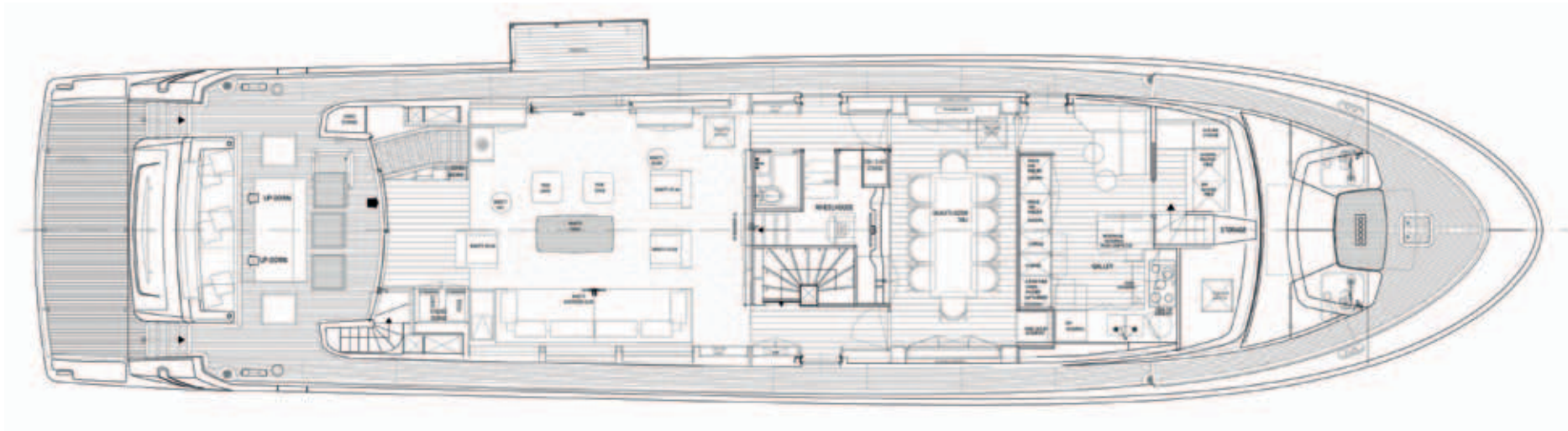
SL96 - 618

**SANLORENZO**

# SL 96

SPECIAL EDITION

MADE TO MEASURE *Yachts.*  
Since 1958



主甲板 *Main deck*

SL96 - 618

**SANLORENZO**

# SL 96

SPECIAL EDITION

MADE TO MEASURE *Yachts.*  
Since 1958



下层甲板 *Lower deck*

SL96 - 618

**SANLORENZO**

## SL 96 - 618 OPTION & UPGRADES LIST

### LIST PRICE

SL 96 - 618 / 2 x MTU 16V2000M84 (2185 Hp)

€ 7.500.000

### LIST OF OPTIONS AND UPGRADES

PRICE €

#### Electrical appliances

Voltage Regulator - special price	13.600
-----------------------------------	--------

#### Navigation Electronics

Raymarine platinum package	20.000
----------------------------	--------

#### Alarms and controls

CCTV: 2 cameras in cockpit, 3 cameras in engine room, 1 monitor	12.000
---	--------

Touch Screen monitor in crew area	5.000
-----------------------------------	-------

Burglar alarm with infrared sensors inside and in lateral walkways	11.000
--	--------

Touch screen with configuration in Chinese	N/C
--	-----

#### Satellite and communication systems

SAT TV antenna KVH TrackVision M9	23.000
-----------------------------------	--------

PABX telephone switchboard	8.000
----------------------------	-------

N.4 Cordless Panasonic in salon, galley, master and Vip cabins	2.000
--	-------

#### Audio and video appliances

I-pod docking station for n.8 postions (salon, master, 2x guest cabin, VIP, crew mess, flybridge) - <i>special offer</i> -	N/C
--	-----

Bose Lifestyle V35 in Salon	5.600
-----------------------------	-------

Hi-Fi Dolby Surround BOSE 321 in Master cabin and VIP	2.000
---	-------

Bose speaker external system: n.4 speakers + subwoofer in cockpit; n.4 speakers + subwoofer on flybridge + n.2 speakers on bow	9.500
--	-------

Bluray DVD in salon	390
---------------------	-----

TV Upgrade for the whole boat: TV 65" in salon (diff from 32"); TV 46" in master cabin (diff from 26"); TV 32" in VIP (diff from 20"); TV 22" in guests; TV 46" in dining room; TV 40" on flybridge; TV 20" in crew dinette	24.000
---	--------

## LIST OF OPTIONS AND UPGRADES

€

### Household appliances

Wine cooler Gaggenau (102 bottles)	8.000
Ice Maker Vitrefrigo in salon	4.200
Siemens Teppan Yaki on Flybridge	3.500
Gaggenau coffee machine	2.500
Trash compactor	3.500
n. 2 Subzero fridge/freezer in galley	15.575
Steam oven in galley	4.300
Ily coffee machine in salon	500
Warming drawer in galley	2.500

### Complements for the interior

Mirror that hides TV in VIP, 2 guests, master cabin	6.000
Pullman berths (2 guests)	10.000
Sliding beds in guest cabins	5.000
Electrical blind curtains in salon, dining and electrical blinded curtains in master, VIP and guests cabin	17.100
Safe in all cabins	3.600
Drinkware: n.12 tumbler high ball, n.12 larger tumbler, n.12 wine glasses, n.12 flutes	550
N. 12 towel sets (set composed by: n.1 towel 100x150, n.1 towel 60x110, n.1 towel 40x60, n.1 towel 30x30, with Sanlorenzo logo embroidered)	2.700
Stripleds over all the curtains and under all furnishings	14.700
n. 2 Minotti Nay Chromed finishing	2.500
Sheets set for each bed (n. 2 double and 2 twins) composed by: n.1 white sheet, with orange decorative stripe, Sanlorenzo logo embroidered, n.1 white pillowcase per person with orange decorative stripe, n.1 orange pillowcase per person with white stripe	4.000

## LIST OF OPTIONS AND UPGRADES

€

### Complements for the interior

Foglizzo leather for VIP ceiling and lower deck lobby	3.250
n. 1 Minotti Cesar varnish rusty finishing	970
Bed head in Stainless steel and ragtime leather	8.400
Bow bulkhead in the dining area with squared leather panels back-lighted	8.000
Décor upgrade: Bleached oak finishings; Tri-dimension finishing for all the furnishing in salon, dining and TV panels; Salon, dining area and master cabin ceilings in leather Foglizzo Full Custom; lateral ceilings in salon (port and starboard side) in stainless steel, corridor, dining area and master cabin entrance; wall in marble in master cabin bathroom (aft wall, head and shower); leather beds and cupboards coverings in every area. Additional WC and sink in owner's bathroom	
Parquet in galley	116.300
Coffee cups for 10 persons in galley	600
Set of glasses for 10 people (wiskey-water-winechampagne)	1.975
n.2 Contardi Coco Deluxe Ta in the master cabin	2.680
n.1 Contardi Athena Ta in salon	1.500
Second headshower in master bathroom	3.000
Bow bulkhead in the dining area with squared leather panels back-lighted - panel color change in Black and Gold leather cover	9.880
n.1 Minotti Cesar pouf	715
n.2 Minotti Davis (one in yellow leather plus one in black leather)	2.460
n.10 chairs in white leather	4.500
n.1 Minotti Mongè bench in black leather	1.200
n.3 minotti Altan armchairs with armrests	1.000
Decorative pillows in different colours	850
Set of glasses for 10 people	1.515
n.2 additional chairs in dining area	2.100
n.2 poufs in salon	3.400
Additional shelves in the aft cockpit storages	800



# SL 96

SPECIAL EDITION

MADE TO MEASURE *Yachts.*  
Since 1958

## LIST OF OPTIONS AND UPGRADES

€

### Complements for the exterior

Hard top	150.000
Teak deck on fly bridge	45.000
Underwater lights Oceanled (n.5 total)	10.000
Lateral balcony and sliding door (special price)	80.000
Galley lateral door	15.000
Vertical sliding lids in dining area	N/C
Manual bimini top on flybridge with stainless steel stanchions	6.000
Glass holders on flybridge	815
Extended swimming platform with lift system	42.000
Black mat finishing for all the features installed on the mast	STD
Foot switch for anchor capstans	1.500
Jacuzzi custom on flying bridge comprehensive of the whole sunbathing area	47.000
Boffi kitchen on flybridge	6.000
Flag pole in stainless steel	800
N.3 option armchairs for flybridge	Décor Upgrade
Electric up/down table in cockpit	7.500
Plexiglass protection for flybridge dashboard	1.200
n.2 plexiglass boxes to install on flybridge outboard storage	1.800
Additional cover col. Black for sliding closure between flybridge and pilothouse	900
n.20 additional decorative pillows on flybridge sunbed and cockpit sofa	1.200
Stainless steel column shower on Flybridge	3.000

# SL 96

SPECIAL EDITION

MADE TO MEASURE *Yachts.*  
Since 1958

## LIST OF OPTIONS AND UPGRADES

€

### Thrusters and stabilizers

Joystick for electric steering	16.000
Third control station in cockpit	13.000
Electric stabilizers Zero Speed (working at anchor and underway)	190.000

### Engine room equipment

Watermaker 230lt/h	15.000
Metal cage in engine room over the main engines	3.725
Glendinning	14.000
Fuel conditioning system ALGAE-X smart FPS LX-F	18.325
Tropicalized air conditioning system (tot 240.000 btu)	22.750

### Certifications and Safety

Life Rafts 10 man canister	1.100
----------------------------	-------

## TOTAL OPTIONAL AND UPGRADES AT RETAIL PRICE

1.135.525

## TOTAL: LIST PRICE + OPTION & UPGRADES

€ 8.635.525

*List price & options*

SL96 - 618

**SANLORENZO**

# SL 96

## SPECIAL EDITION

MADE TO MEASURE *Yachts.*  
Since 1958

Length overall	29,10 m	全长	29,10 米
Length at waterline @ half load	23,60 m	半载时的水线长度	23,60 米
Maximum Beam	6,75 m	最大船宽	6,75 米
Draught @ full load	1,93 m	满载吃水深度	1,93 米
Construction height	3,27 m	建造高度	3,27 米
Displacement @ half load (+/-3%) (*)	97,00 t	半载排水量 (+/- 3%) (*)	97,00 吨
Displacement @ full load (+/-3%) (*)	104,00 t	满载排水量 (+/- 3%) (*)	104,00 吨
Guest Accommodation	10 People	客舱床位	10 人
Crew accommodation	4 People	船员舱床位	4 人
Engines	2 x MTU 16V2000M84 (2185 Hp)	发动	2 x MTU 16V2000M84 (2185 马力)
Consumption (**)	2 x 350 l/h @ 2200 rpm	耗油量 (**)	2 x 350 l/h @ 2200 rpm
Power 100% MCR	1630 KW @ 2450 rpm	最大连续定额动力	1630 千瓦 @ 2450 rpm
Reduction Gear	2 x ZF BW 3060V, R=2,750:1	减速器	2 x ZF BW 3060V, R=2,750:1
Transmission	V – drive	变速器	V – drive
Propellers	5 blade in NiBrAl in class “S”	螺旋桨	5 blade in NiBrAl in class “S”
Shafts	In Aquamet 17 or equivalent	传动轴	In Aquamet 17 or equivalent
Rudders	AISI 316 Stainless Steel	舵	AISI 316 不锈钢
Maximum Speed (***)	a) 26 knots b) 29 knots	最高航速 (***)	a) 26 节 b) 29 节
Cruising Speed (***)	a) 23 knots b) 26 knots	巡航速度 (***)	a) 23 节 b) 26 节
Max range @ economic speed	1119 nm / 11 kn MTU	最大续航能力@经济航速	1119 nm / 11 节 MTU
Max range @ cruising speed	418 nm / 26 kn MTU	最大续航能力@巡航速度	418 nm / 26 节 MTU
Power Generator	2x40 KW	发电机	2x40 千瓦
Deadrise	16°	船底斜度	16°
A/C Power	180.000 Btu/h	空调功率	180.000 Btu/h
Capacity Fuel Tank	8.150 l	标准燃油箱容量	8.150 升
Daily Fuel tank Capacity	2.600 l	日常燃油箱容量	2.600 升
Capacity Fresh Water Tank	1.900 l	淡水箱容量	1.900 升
Capacity Black Water Tank	930 l	黑水箱容量	930 升
Capacity Grey Water Tank	850 l	污水箱容量	850 升
Tender Dimensions	Max 4.30 m	可装载橡皮艇尺寸	最长 4,30 米

\* The displacement data relating to the vessel with reference fit out, as described within these specifications.

\*\* The data relating to the characteristics and performance of the Main Engines, are derived from data furnished by the Manufacturer

\*\*\* The data relating to the speed of the vessel refer to reference fit-out, in accordance with the present specification considering 1/3 of the tanks load, 1/3 overall weight of luggage (considering 25 kg of luggage for each berth) and 5 members of crew (80kg per person), without stabilizer system "zero speed" or "under way" and under cleaning hull conditions (Ref. Par.1.5)



Sanlorenzo Spa

- Questa brochure non costituisce né rappresenta in alcun modo un'offerta valevole come contratto per la vendita di imbarcazioni del cantiere Sanlorenzo Spa a società o persone.
  - Tutte le informazioni contenute nella brochure, compresi tutti i dati tecnici, i dati prestazionali, le illustrazioni e i disegni dei motor yacht del cantiere Sanlorenzo Spa, hanno valore meramente indicativo e non possono costituire vincolo contrattuale. In particolare devono ritenersi indicative e non vincolanti le diverse opzioni sugli allestimenti rappresentate nella presente brochure.
  - Costituiranno valido vincolo unicamente le indicazioni tecniche e le descrizioni dell'imbarcazione previste e concordate specificamente nella documentazione contrattuale, sia preliminare che definitiva, di acquisto. Le uniche indicazioni valide per il compratore dal punto di vista contrattuale sono contenute nel contratto di vendita e nel manuale relativo alla specifica imbarcazione oggetto dell'acquisto. Questo documento è interamente basato sulle informazioni disponibili al momento della sua pubblicazione. Nonostante l'impegno posto ad assicurare la maggior accuratezza possibile, le informazioni in esso contenute possono non coprire esaurientemente tutti i dettagli e le modifiche intervenute, o descrivere caratteristiche non presenti, e potrebbero altresì non prevedere tutte le ipotesi che potrebbero verificarsi.
  - Questa brochure e il suo contenuto non possono essere copiati o riprodotti e non possono essere modificati, sostituiti o alterati, in tutto o in parte.
  - È vietata la vendita della presente brochure.
- 
- This brochure cannot be construed as a proposal having contractual validity for the sale of boats manufactured by the Shipyard Sanlorenzo Spa, whether to organisations or to private individuals.
  - All the information given herein, including technical and performance data, the illustrations and the drawings of Sanlorenzo Spa motor yachts, is merely indicative and shall not be binding for contractual purposes. In particular, the different specification options described in this brochure shall be regarded as having merely indicative and not binding value.
  - Only the technical data and the descriptions of the boats specified and agreed upon explicitly in the preliminary and definitive contractual documents shall be binding. For contractual purposes, the only valid indications for the buyer are those set forth in the sales contract and the user manual for the boat purchased.
  - This brochure is based on the information available at the time of its publication. Notwithstanding the care devoted to ensure the highest possible degree of accuracy, the information contained herein may fail to cover all the details and the changes that have been made in the meantime, or it may describe features that are no longer present, or it may fail to contemplate all possible additions and variations.
  - This brochure and its content cannot be copied, reproduced, modified, replaced or altered, whether fully or partially.
  - This brochure is not for sale.